



HELP FOR PROGRESSIVE WOMEN FOUNDATION

PROFILE

www.helprowfoundation.org

OFFICE ADDRESS

ADAMAWA

No. 3 Behind NNPC Quarters, Karewa GRA, Jimeta-Yola

Adamawa State

080320963956 | 07063792914

contact@helprowfoundation.org | helprowomen@gmail.com

ABOUT US

HELPROW is a non-profit, non-governmental CBO based at Adamawa state with a scope of programs that encompass HIV, WASH, malaria and economic empowerment initiatives targeting women and Sex Workers.

A key priority of the organization is to reduce community discrimination as well as program and donor bias that has existed for several years against Sex Workers and other key/vulnerable populations.

HELPROW was founded in 2019 by a group of women who recognized the need for greater representation and support for women in their local community. Since then, the organization has grown to become a leader in the fight against Sexual Based Violence, Economic Empowerment, Women and Child Right, WASH and implementation of HIV based programs across Adamawa State.

VISION:

Women, vulnerable groups and key populations empowered to live free from bias, ignorance, disease, poverty and violence.

MISSION:

To inspire hope, promote and protect the health, rights and well-being of women, vulnerable groups and key populations through empowerment and socially inclusive programs.

CORE PROGRAMS| THEMATIC FOCUS

- I. Health (HIV/AIDS, GBV and MALARIA)
- II. Education
- III. Women Empowerment.
- IV. WASH
- V. Women Right

LEGAL STATUS

HELPROW is registered with the Nigerian Corporate Affairs Commission: CAC/IT/No 166546

GOVERNANCE

Hel is governed by its board of trustees (BOT). The board is the key policymaking and freelance crowd of the organization and works in depend quality. It formulates and approves policies and organizational systems and evaluates the overall performance of HELPROW on period basis.

The Executive Director of the HELPROW serves the board as the secretary. The Board works on the guidelines of the Board policies manual.

MANAGEMENT

HELPROW is led by its Executive Director who is the formal head of the organization. The Executive Director reports to the Chairman of the Board of Trustees (BOT) and is responsible for the overall management of the organization.

The Executive Director is supported by the Lead Program Officer and other heads of Departments.

PARTNER AND PARTNERSHIPS

Partnerships are the heart line of HELPROW. The organization refers PARTNERS to all those individuals, communities, organizations and departments which join hand for extending program interventions. Beneficiary communities, the line Departments, National and International Donors, the Provincial Governments and other key stakeholders from Civil Society are the best examples of **HELPROW's** partners.

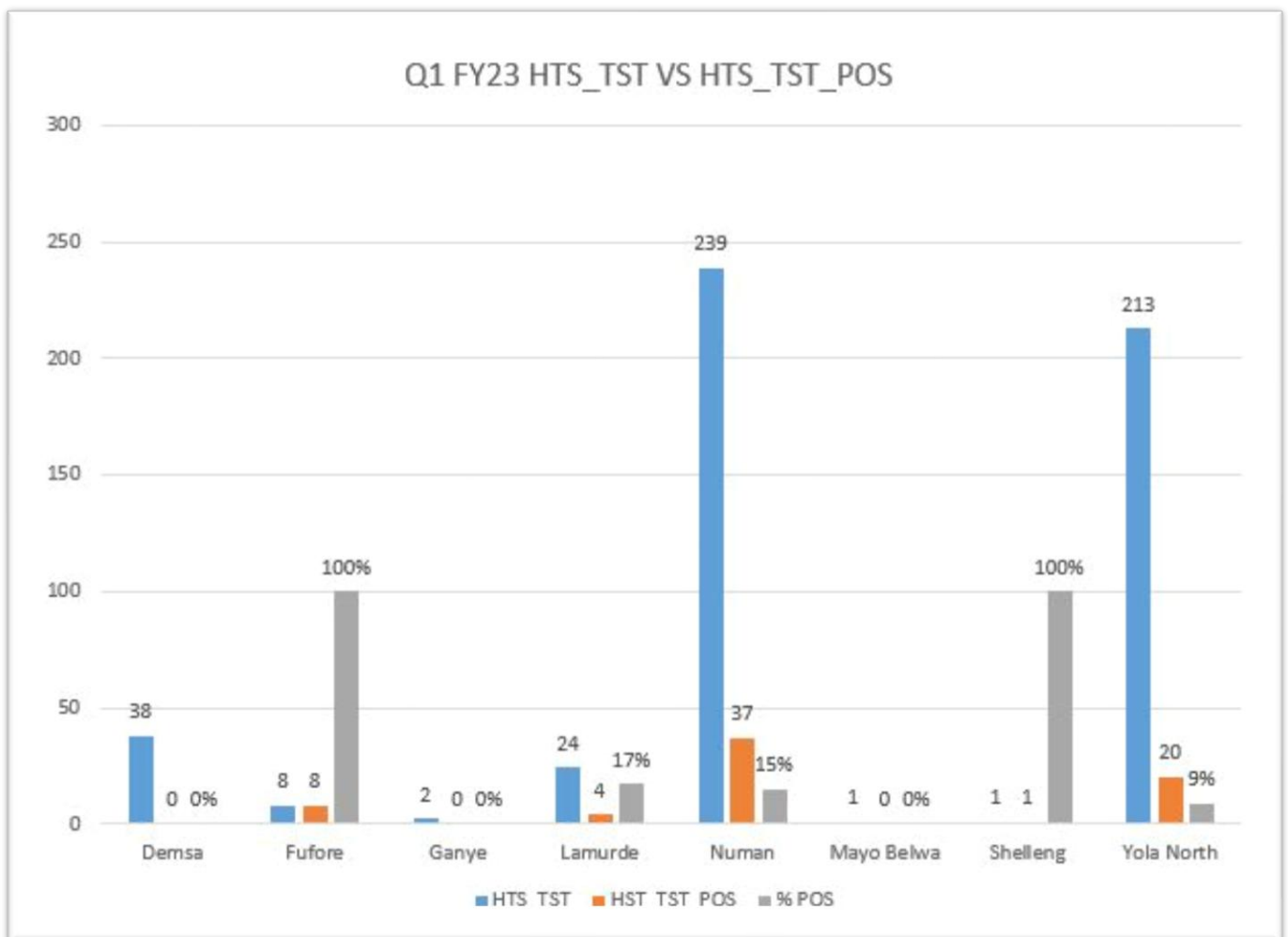
Our Key Staff

S/N	NAME	POSITION	PHONE NUMBER
1.	Mrs Endurance Gowono	Executive Director	08032096395
2.	Ms Patience Alfred	Program Officer	07063792914
3.	Ms Veronica Sandal	Finance and Admin Officer	08035337949
4.	Ms Ukange Bridget	M&E Officer	08035382531
5.	Blessing Calvin	Peer Navigator	07036760845
6.	Dija Luka	Peer Navigator	08065196956
7.	Amina Ibrahim	Peer Navigator	08034847987
8.	Maryam Abdullahi	Case manager	07060737622

ACHIEVEMENT

Help for Progressive Women Foundation work in collaboration with Society for Family Health to reach out to Female Sex Workers in Adamawa State. The intervention is to enable the Female Sex Workers to optimize access to HIV prevention, treatment care and services through the trained Peer Navigators who are carrying out HIV counseling and testing services, gender norm awareness, PrEP Services and T.B referral among FSW strategic location such as brothels and non-brothels in Adamawa State. HELPROW are covering the following Local Governments within Adamawa State; Mubi North, Mubi South Fufore, Yola North, Yola South and Numan,

The major target and performance of first quarter 2023 was focus on testing the children of KP's, PrEP initiation was made and certain number of clients were linked to care. Below is the summary of our achievement for the quarter.



FINANCIAL PORTFOLIO

HELPROW implement its projects with the grants funding from various national and international donors where it works. These grants are usually time boned and for specific project interventions. HELPROW has learnt a lot while managing grants of diverse donors and has well developed its financial management capability. Since its establishment.

KNOWLEDGE APPROACH & STRATEGIES

The organization strongly believes in the true and active participation of all the stakeholders particularly the local communities or program beneficiaries. Fair efforts are taken to ensure that stakeholders participate and contribute at all stages of the intervention.

The overall approach of work also identifies the gender sensitivity if any related to the program and strategically addresses the same. We take carefully into account the local culture and traditions and fully respects the same.

Following are the key elements of **HELPROW** program strategies and work approach.

- Thematic partnerships.
- Social mobilization community participation.
- Capacity building.
- Dialogues & engagements.
- Networking and coalition building.
- Advocacy and lobbying
- Review and reflection.

CORE VALUES & GUIDING PRINCIPLES

In order to achieve its mission and make it's program even more human centered, **HELPROW** follows certain values and finding principles in all its intervention and dealings.

These include the following:

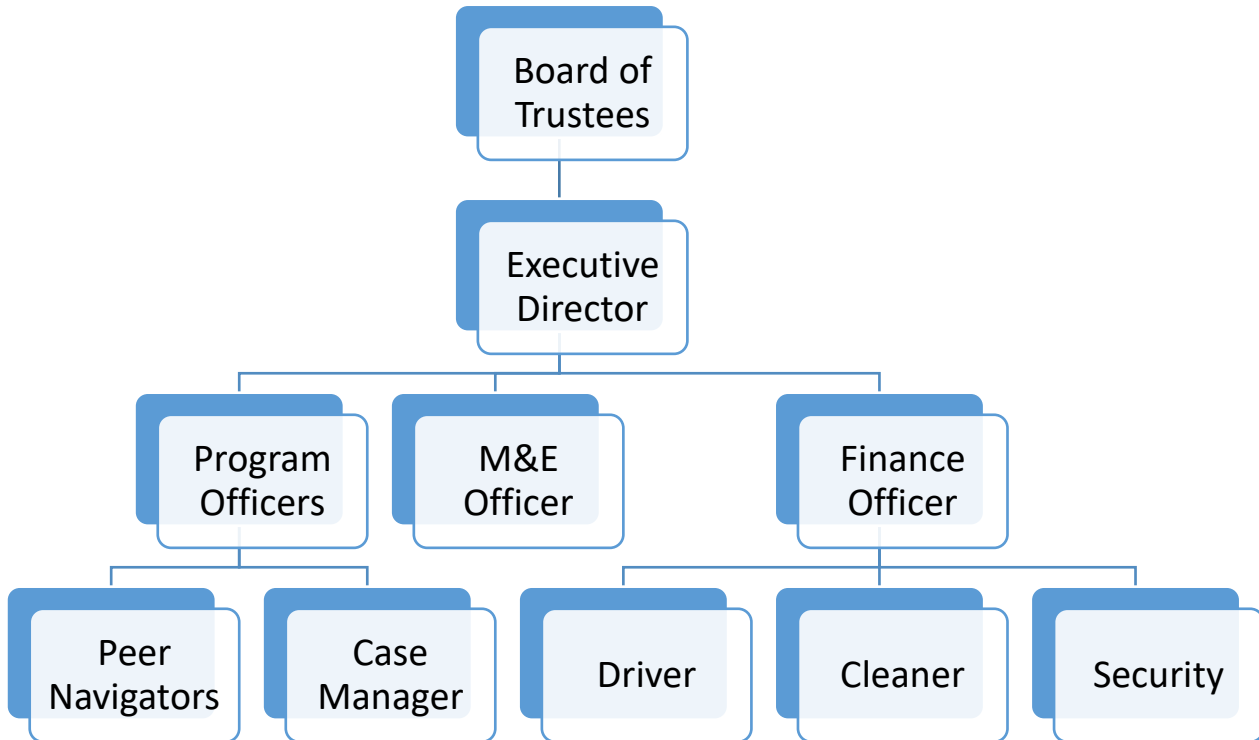
- i. Community Involvement.
- ii. Acceptability and Transparency.

- iii. Integrity.
- iv. Accountability.
- v. Team Work.
- vi. Timeliness.

POLICIES AND SYSTEMS

HELPROW follows its specific set of policies and standard operating procedures (SOPs) which has been revised and updated a number of times up till now in order to make them more staff friendly and organization centered.

HELPROW ORGANOGRAM





FEDERAL REPUBLIC OF NIGERIA

CERTIFICATE OF INCORPORATION

REGISTRATION NUMBER 166546

The Registrar - General of Corporate Affairs Commission

hereby certifies that

**BANGA MADANGA GLORY ALIYU ABDULMALIK AHMED ABDULKADIR
ILYASU**

the duly appointed Trustees of

HELP FOR PROGRESSIVE WOMEN FOUNDATION

have this day been registered as a corporate body.

Given under my hand at Abuja this 27th day of September, 2021



A handwritten signature in black ink, appearing to read "A. G. Abubakar".

A. G. Abubakar
Registrar - General



**Visit our official website for more info at
www.helprowfoundation.org**